

/ SCHEMATIC DIAGRAM

LEVEL	UNIT	01	02	03
20		PH-3	PH-1	PH-2
19		4BR-1	2S-1	3S-1
18		4BR-2	2S-2	3S-2
17		4BR-1	2S-1	3S-1
16		4BR-2	2S-2	3S-2
15		4BR-1	2S-1	3S-1
SKY TERRACE				
14				
13		4BR-2	2S-2	3S-2
12		4BR-1	2S-1	3S-1
11		4BR-2	2S-2	3S-2
10		4BR-1	2S-1	3S-1
9		4BR-2	2S-2	3S-2
8		4BR-1	2S-1	3S-1
7		4BR-2	2S-2	3S-2
6		4BR-1	2S-1	3S-1
5		4BR-2	2S-2	3S-2
4		4BR-1	2S-1	3S-1
3		4BR-2	2S-2	3S-2
2		4BR-1	2S-1	3S-1
LANDSCAPE DECK				
1				
B1		DROP-OFF		
B2		CARPARK		

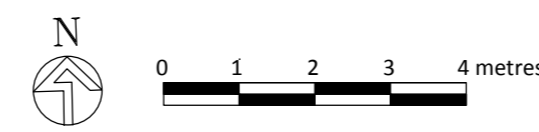
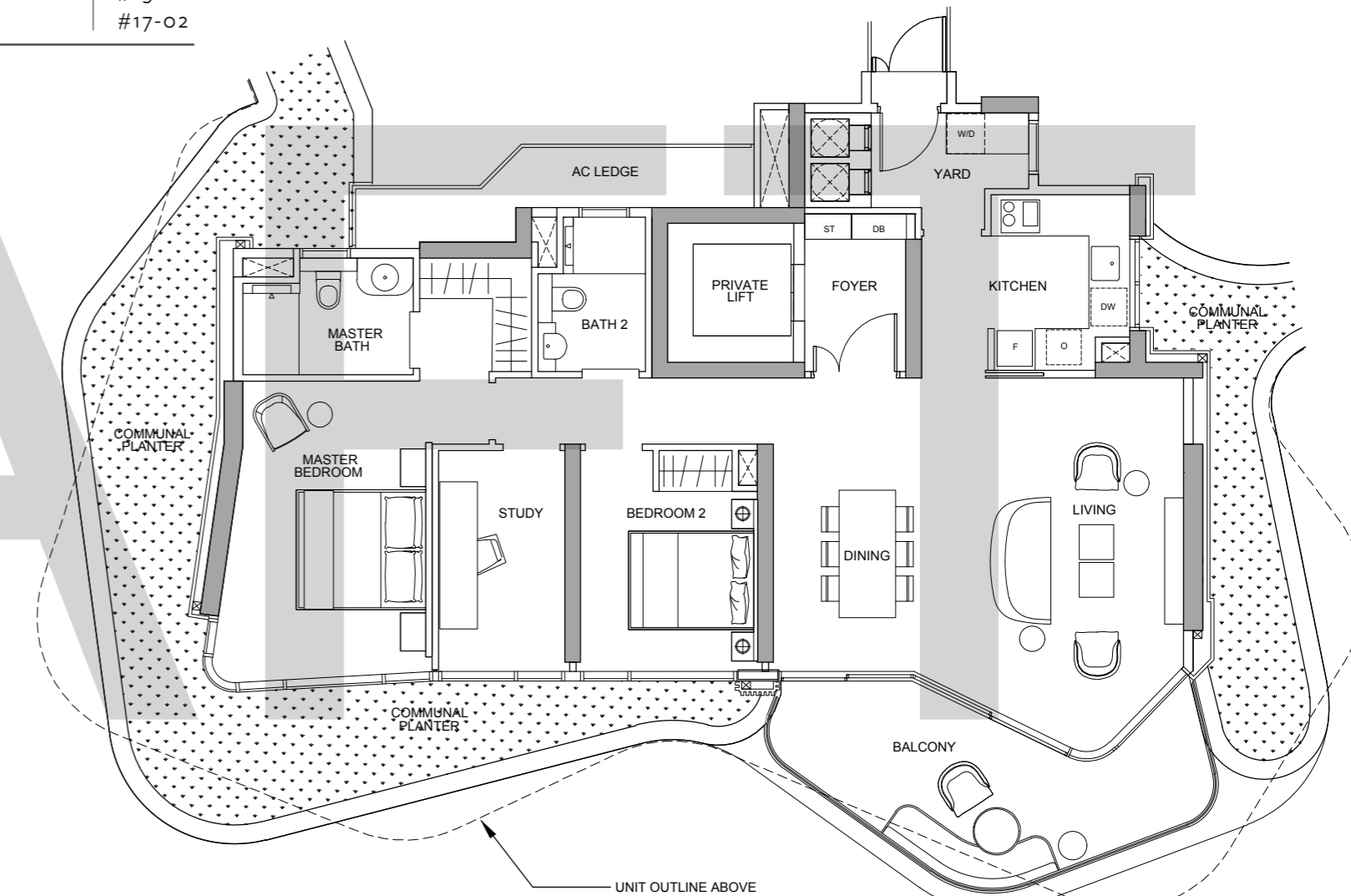
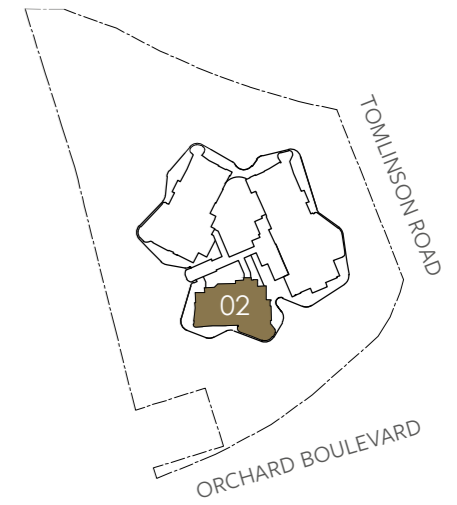
2-BEDROOM + STUDY
 3-BEDROOM + STUDY
 4-BEDROOM
 PENTHOUSE

/ FLOOR PLANS

TYPE 2S-1

18 Tomlinson Road, Singapore
 133 sqm including: 7 sqm - A/C Ledge
 15 sqm - Balcony

- UNITS
- #02-02
 - #04-02
 - #06-02
 - #08-02
 - #10-02
 - #12-02
 - #15-02
 - #17-02



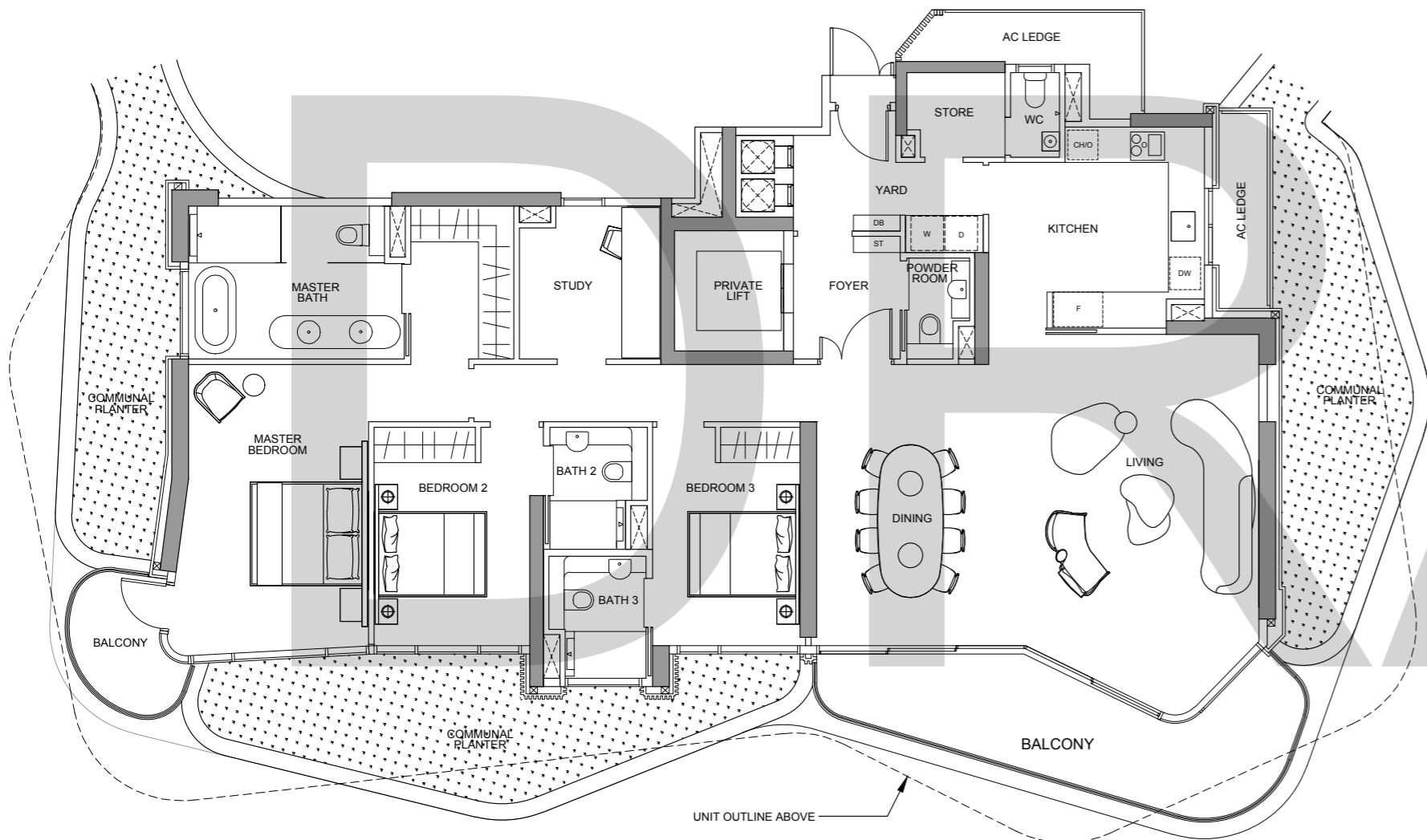
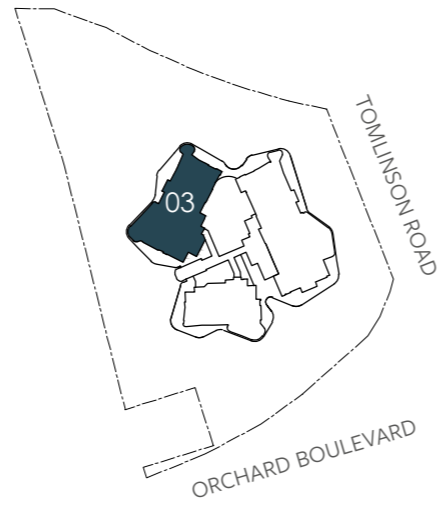
- LEGEND**
- O - Oven
 - F - Fridge
 - W/D - Washer cum Dryer
 - DB - Distribution Board
 - ST - Storage
 - AC - Aircon Ledge
 - DW - Dish Washer

AREA INCLUDES AIR-CON (A/C) LEDGE, BALCONY AND STRATA VOID AREA WHERE APPLICABLE. PLEASE REFER TO THE KEY PLAN FOR ORIENTATION. THE PLANS ARE SUBJECT TO CHANGE AS MAY BE APPROVED BY RELEVANT AUTHORITIES. ALL FLOOR PLANS ARE APPROXIMATE MEASUREMENTS ONLY AND ARE SUBJECT TO GOVERNMENT RE-SURVEY. THE BALCONY SHALL NOT BE ENCLOSED.

TYPE 3S-2

18 Tomlinson Road, Singapore
 205 sqm including: 10 sqm - A/C Ledge
 21 sqm - Balcony

UNITS	#03-03
	#05-03
	#07-03
	#09-03
	#11-03
	#13-03
	#16-03
	#18-03



LEGEND

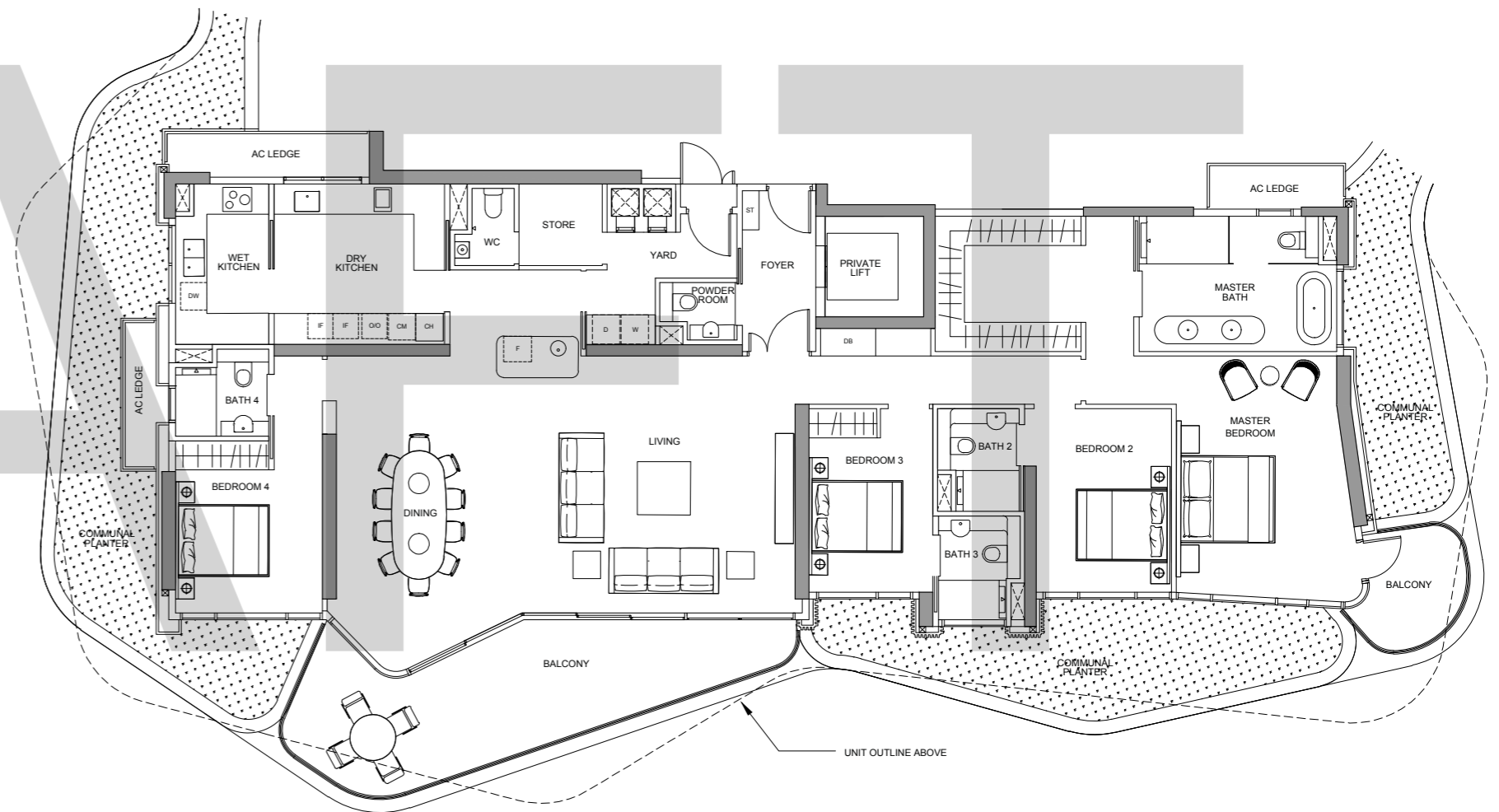
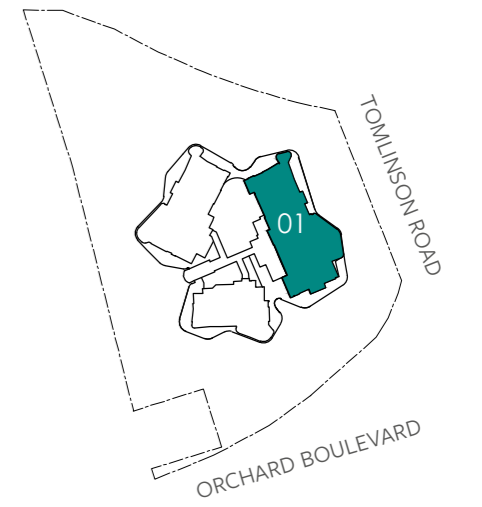
O - Oven	ST - Storage
F - Fridge	AC - Aircon Ledge
W - Washer	DW - Dish Washer
D - Dryer	CH - Wine Chiller
DB - Distribution Board	

AREA INCLUDES AIR-CON (A/C) LEDGE, BALCONY AND STRATA VOID AREA WHERE APPLICABLE. PLEASE REFER TO THE KEY PLAN FOR ORIENTATION. THE PLANS ARE SUBJECT TO CHANGE AS MAY BE APPROVED BY RELEVANT AUTHORITIES. ALL FLOOR PLANS ARE APPROXIMATE MEASUREMENTS ONLY AND ARE SUBJECT TO GOVERNMENT RE-SURVEY. THE BALCONY SHALL NOT BE ENCLOSED.

TYPE 4BR-1

18 Tomlinson Road, Singapore
 270 sqm including: 12 sqm - A/C Ledge
 32 sqm - Balcony

UNITS	#02-01
	#04-01
	#06-01
	#08-01
	#10-01
	#12-01
	#15-01
	#17-01



LEGEND

O - Oven	ST - Storage
IF - Intergrated Fridge/ Integrated Freezer	AC - Aircon Ledge
W - Washer	DW - Dish Washer
D - Dryer	CH - Wine Chiller
DB - Distribution Board	CM - Coffee Machine

AREA INCLUDES AIR-CON (A/C) LEDGE, BALCONY AND STRATA VOID AREA WHERE APPLICABLE. PLEASE REFER TO THE KEY PLAN FOR ORIENTATION. THE PLANS ARE SUBJECT TO CHANGE AS MAY BE APPROVED BY RELEVANT AUTHORITIES. ALL FLOOR PLANS ARE APPROXIMATE MEASUREMENTS ONLY AND ARE SUBJECT TO GOVERNMENT RE-SURVEY. THE BALCONY SHALL NOT BE ENCLOSED.

DRAFT



PROJECT INFORMATION

Developer: Shun Tak Cuscaden Residential Pte. Ltd. (UEN No.: 201727882Z) Developer's Licence No.: C1356 Tenure: Estate in fee simple (Freehold) Expected Date of Vacant Possession: 31 Oct 2024.
Expected Date of Legal Completion: 31 Oct 2027 Lot No.: 1072L of TS 24 Encumbrance: Mortgage registered in favour of OCBC Ltd.

DISCLAIMER

While every reasonable care has been taken in preparing the information contained herein, neither the developer nor its agents will be held responsible for any inaccuracies or omissions. All statements are believed to be correct but are not to be regarded as statements or representation of facts. All information and specifications are current at the time of going to press and are subject to such changes as may be required by the developer. All plans and models are not to scale unless expressly stated and are subject to any amendments which are required or approved by the relevant authorities. Renderings and illustrations are artist's impressions only and photographs are only décor suggestions and cannot be regarded as representations of fact. All areas and other measurements are approximate only and subject to final survey. The Sale & Purchase Agreement embodies all the terms and conditions between the developer and the purchaser and supersedes and cancels in all aspects all previous representations, warranties, promises, inducements or statements of intention, whether written or oral made by the developer and/or the developer's agent which are not embodied in the Sale & Purchase Agreement.